



**7<sup>th</sup> SGA-IUGS-UNESCO-SEG- Short Course on African Metallogeny  
Energy Metals for a Sustainable Society**

Windhoek, Namibia, 29<sup>th</sup> November– 3<sup>rd</sup> December 2021

***PHOTOGRAPHY COMPETITION***



**Geopark attraction “Spitzkoppe”**

## **PREFACE**

After the short course in Namibia, a photography competition was launched to select the best photos and make an album. We set up a committee composed of nine members from different SGA student chapters (Senegal and Ivory Coast) and soon (Namibia, Cameroon) and Algeria.

Nine people from 4 countries (France, Namibia, Cameroon and South Africa) participated in this contest by sending their 05 best photos taken during the short course in Namibia. At the end of this contest, the committee chose an album of 30 photos taking into account all aspects (Icebreaker party, Coffee break, Lecturer, Gala diner, Workshop, Excursion). The 3 best photos of this album will be awarded and published

This contest has allowed to federate the network of SGA student chapters which was set up during the Virtual seminar of 2020 but also to reinforce the collaboration thanks to the SGA and the support of UNESCO.

## **ORGANIZING COMMITTEE**

M. Silas David, Namibia University of Science and Technology, Namibia

Ms. Elisia Sheya, Namibia University of Science and Technology, Namibia

M. Malick Faye, Geology department of Cheikh Anta diop university, Senegal

M.Doro Niang, Geology department of Cheikh Anta diop university, Senegal

Ms Mary Immaculate Neh Fru, University of Buea, Cameroon

M. Cho Terence Ngang, University of Bamenda, Cameroon

M. Hadj Ghani Menasria, University Houari Boumedienne. Algiers. USTHB Alegria

Ms Neila Meriem Seray, University Houari Boumedienne. Algiers. USTHB, Algeria

M. Tegan N'dri Eudes Sati INP-HB/EDP. Yamoussoukro, Ivory Coast

## **PARTICIPANTS**

M. Shipandeni Abraham, Geological Survey of Namibia

Ms Mary Barton (University of Namibia, Keetmanshoop, Namibia)

Ms Angeline KASONDA University of Science and Technology Namibia

Ms Josephina Lotho Namibia, University of Science and Technology, Namibia

Ms Philadelphia Mbingeneeko (Geological Survey Namibia)

M. Sunny Shilongo, Namibia University of Science and Technology, Namibia

Ms Beate Orberger (SGA Council member, Catura Geoprojects, France)

Ms. Aginyui Raii, University of Bamenda, Cameroon

M. Leonidas Vonopartis, University of Witwatersrand, South Africa



Icebreaker, Namibian traditional dancing group (**Beate ORBERGER**)



Icebreaker Party at the Ministry of Energy and Mines, Windhoek, Namibian traditional dancing group (**Beate ORBERGER**)



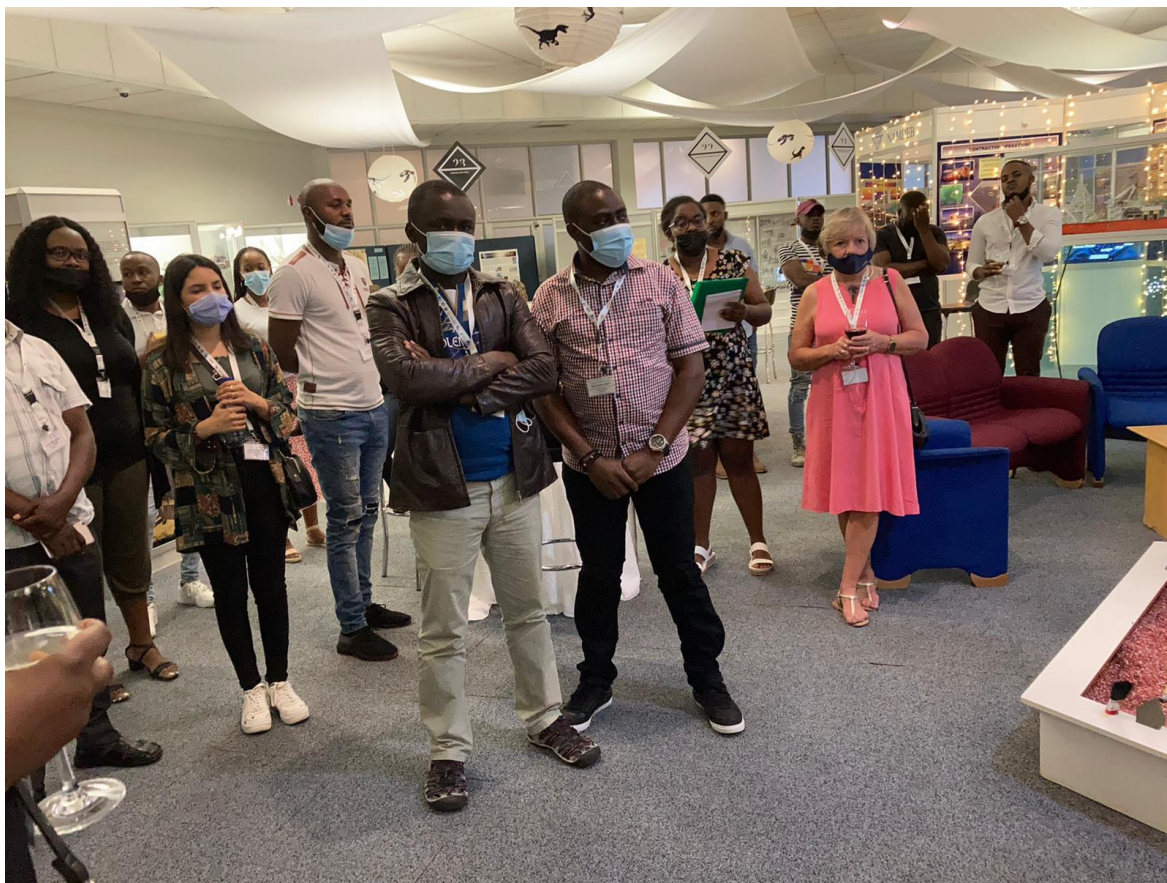


Icebreaker Party (**Josephina Lotho**)



Icebreaker Party (**Ajinyui Raii**)





Icebreaker Party (**Beate ORBERGER**)

---



Coffee break, (*Shipandeni Abraham*)



Waiting for the Gala dinner (*Sunny Shilongo*)

---





Lecture by Benjamin Mapani (**Mary Barton**)







Lecture by Anna Nguno (*Mary Barton*)



Lecture by Nortin Titus (*Mary Barton*)



---

Lecturers and students, Conference room (***Shipandeni Abraham***)

---

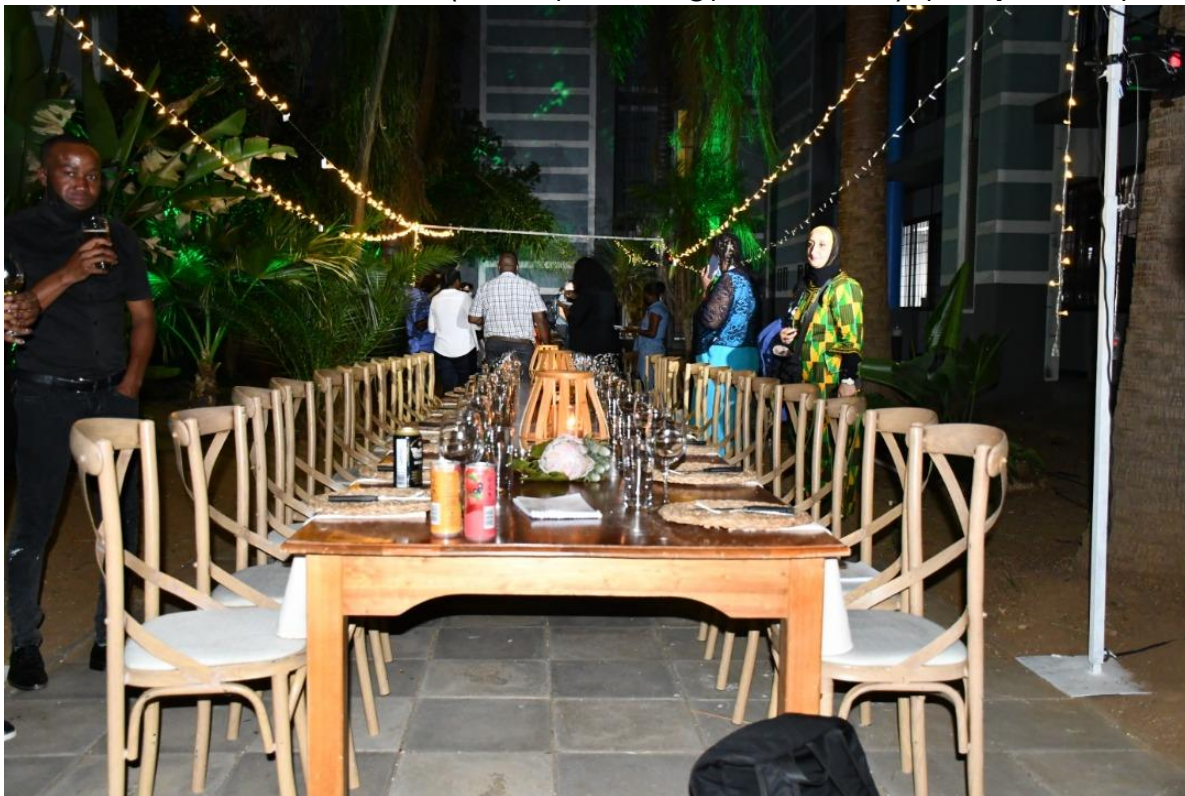
**From left to right:** Mary Barton, Malick Faye, Doro Niang, Patrick Ledru, Neila Meriem Seray, Anna Nguno, Beate Orberger, Hadj Ghani Menasria.

---





Gala diner, Jurassic Park (Ministry of Energy and Mines), (**Mary Barton**)



Gala diner, Jurassic Park, (Ministry of Energy and Mines), (**Shipandeni Abraham**)



Gala diner, Jurassic Park, (Ministry of Energy and Mines) (***Filadelphia Mbingeneeko***)

---





Workshop with Roy Miller on drill cores at the Ministry of Energy and Mines (**Mary Barton**)





Workshop with Helmholtz Institute of Technology, Freiberg, Germany:  
Hyperspectral cameras for mineralogical mapping of outcrops (**Mary Barton**)

---





Excursion, Lepidico Mine project (**Mary Barton**)



Excursion, (**Mary Barton**)





Excursion, Moon landscape of Damara sequence lithologies in the southern Central Zone looking over the Swakop Rvier (**Leonidas Vonopartis**)

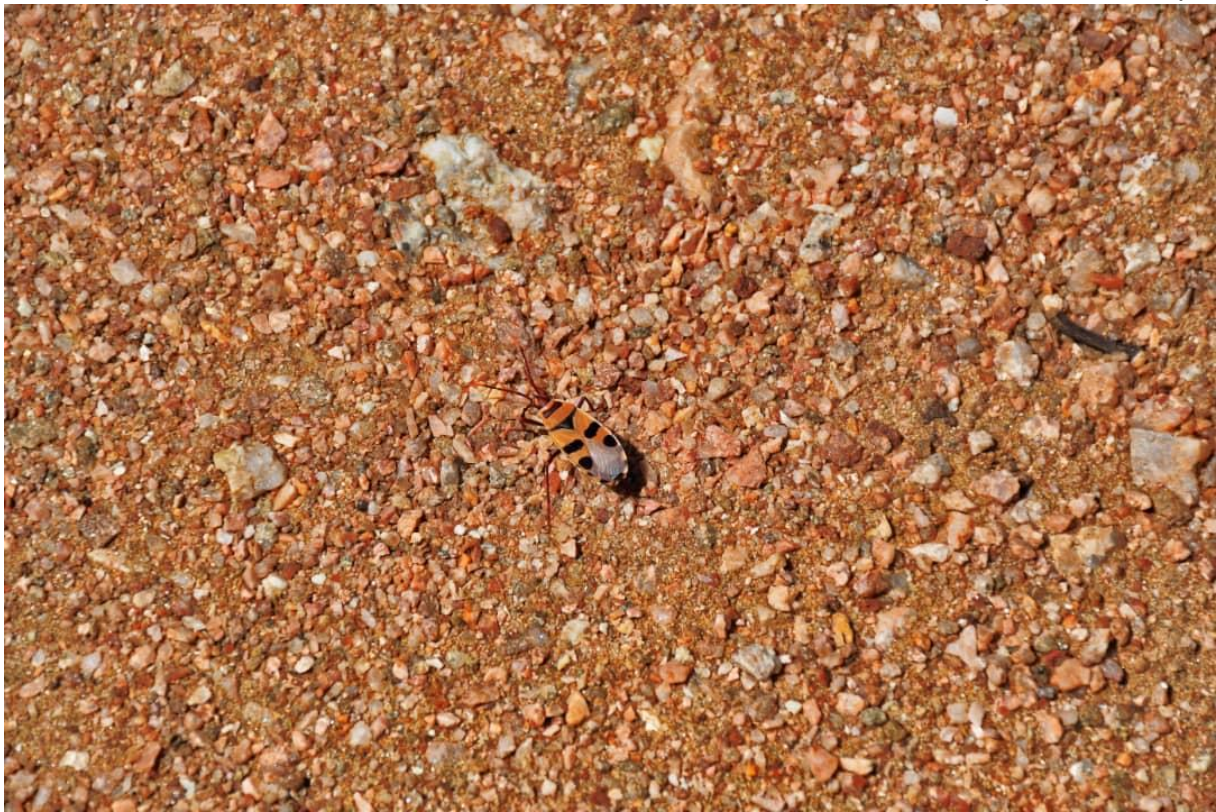


Excursion, Fred Bear and Monazite Crystals, (**Leonidas Vonopartis**)





Typical desiccation features of clay, excursion with Paul Nex, (**Mary Barton**)



Welwitschia bug (**Mary Barton**)





Excursion, brilliant exposures of cross cutting dolerite dykes in the Dykes Swakop River Valley (**Leonidas Vonopartis**)



EUREKA REE project: sample types for lithological mapping (**Beate ORBERGER**)





Welwitschia plant explained by Paul Nex (Witwatersrand University) **(Beate ORBERGER)**



Group picture excursion (**Mary Barton**)





Rössing open pit uranium mine, (*Josephina Lotho*)



Entrance at Rössing uranium mine, (**Angeline Kasonda**)



## **Acknowledgement**

We will like to thank SGA and UNESCO for the sponsorship they offered to students to be able to attend this short course and also the Namibian Ministry of Mines and Energy for all the support and hosting this event.